

Temporary Space Maintainer for Broken Appliances

JESUS FERNANDEZ SANCHEZ, MD, DDS, MS
MARTA MATA MONEDERO, DDS

When a Nance holding arch fractures during molar distalization with a device such as a Jones Jig* or a nickel titanium spring (Fig. 1), space can be lost while the appliance is being repaired. This article shows how to make a temporary space maintainer for such an emergency.

Technique

The space maintainer is made with a light-cured temporary restorative material (Fermit**). This material can be easily manipulated with the fingers to fit between the first molar band and the bicuspid (Fig. 2). Cure each of the three surfaces for 30 seconds to set the material (Fig. 3). Make a mark on one end before final curing to facilitate future placement in the mouth (Fig. 4).

Remove the cured space maintainers (Fig. 5), and instruct the patient in how to replace them according to the marks (Fig. 6).

If the patient wears the space maintainers regularly, the repaired Nance holding arch can be recemented with no loss of space (Fig. 7).

*American Orthodontics, 1714 Cambridge Ave., Sheboygan, WI 53082.

**Ivoclar North America, 175 Pine View Drive, Amherst, NY 14228.

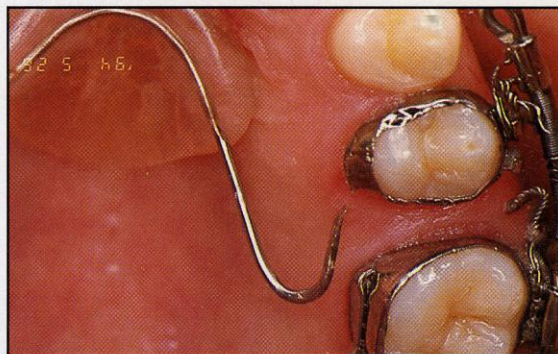


Fig. 1 Fractured Nance holding arch.

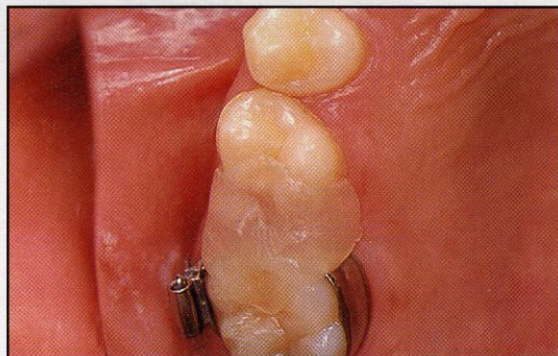


Fig. 2 Temporary restorative material placed between molar band and bicuspid.

The authors are from the Universidad Complutense de Madrid, Spain. Dr. Fernández is in the private practice of orthodontics at Paseo de las Delicias 55, 28045 Madrid, Spain.



Dr. Fernández



Dr. Mata



Fig. 3 Light-curing of restorative material.

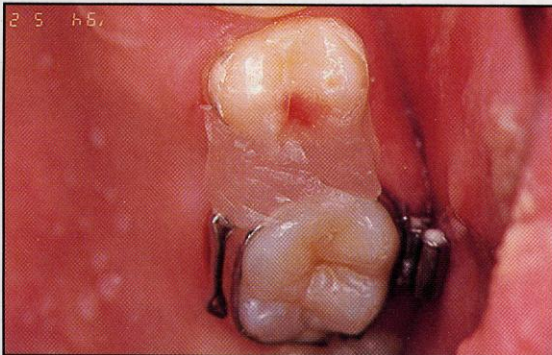


Fig. 4 Mark made on anterior end of material before final curing.

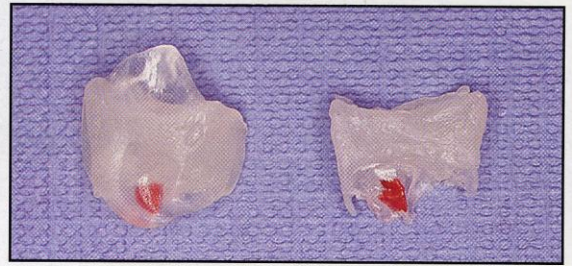


Fig. 5 Cured space maintainers.



Fig. 6 Space maintainers replaced in mouth according to marks.

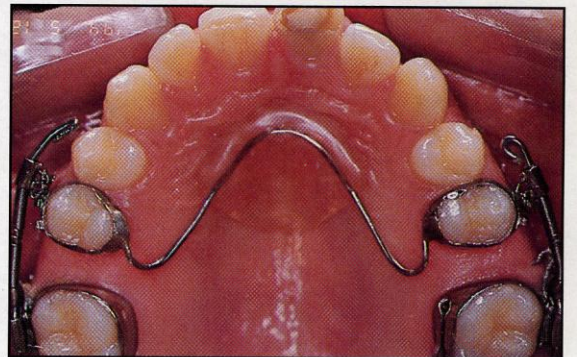


Fig. 7 Repaired Nance holding arch recemented with no loss of space.